



ATHENS MICRONEUROSURGERY LABORATORY



UNIVERSITY OF ATHENS – EVANGELISMOS HOSPITAL



HELLENIC NEUROSURGICAL SOCIETY

WHITE MATTER DISSECTION

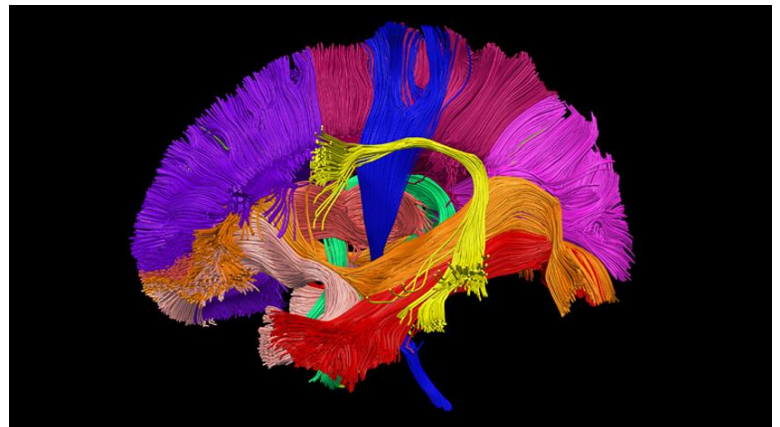
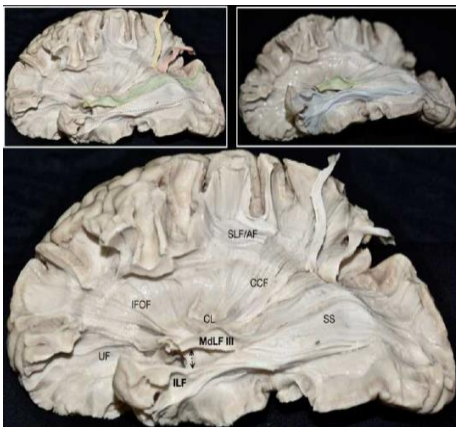
4, 5 May 2020

&

NEUROSURGICAL ANATOMY

6-8 May 2020

CADAVERIC COURSES



Athens Microneurosurgery Laboratory

Director: Prof. G. Stranjalis

This course is accredited with xx European CME credits (ECMEC®s) by the European Accreditation Council for Continuing Medical Education (EACCME®)

UNDER THE AUSPICES OF:



THE EUROPEAN ASSOCIATION
OF NEUROSURGICAL SOCIETIES

FACULTY

G. Stranjalis	Lab Director , Professor, Department of Neurosurgery, University of Athens, Evangelismos GH
C. Koutsarnakis	Lab Head , Consultant Neurosurgeon, Athens Microneurosurgery Lab, Metropolitan, GH
F. Liakos	Consultant Neurosurgeon, Athens Microneurosurgery Lab, Hygeia GH
P. Stavrinou	Consultant Neurosurgeon, Metropolitan GH, Athens
A. Fratzoglou	Consultant Neurosurgeon & Lead Clinician, Piraeus GH
E. Mpairamidis	Consultant Neurosurgeon, Mytilini GH, Lesvos
E. Liouta	Neuropsychologist, Department of Neurosurgery, Evangelismos GH
S. Komaitis	Neurosurgeon, Department of Neurosurgery, University of Athens, Evangelismos GH

GUEST FACULTY

P. Chumas	Consultant Adult and Pediatric Neurosurgeon, Leeds Teaching Hospitals, Leeds UK
A. Tyagi	Consultant Adult and Pediatric Neurosurgeon, Leeds Teaching Hospitals, Leeds UK

INVITED FACULTY

I. Fouyias	Clinical Lead, Dept. of Clinical Neurosciences, Western GH, Edinburgh, UK
M. Lee	Clinical Professor of Neurosurgery, Stanford University, USA
L. Stavrinou	Oberarzt, Schlosspark Klinik, Berlin, Germany
A. Kalyvas	Clinical Fellow, Endoscopic Skull Base Surgery, Toronto Western General Hospital, Canada
K. Varaki	Director, Neuroradiology & Advanced Oncologic MRI Dpt, Metropolitan Hospital, Athens

TECHNICAL SUPPORT

S. Siametis	MSc
--------------------	-----

ADMINISTRATION


M. Loufardaki	MSc
----------------------	-----

A. Loufardaki

LOCATION

ATHENS MICRONEUROSURGERY LABORATORY, EVANGELISMOS HOSPITAL

3 Ploutarchou str, 10675, 1st floor, Athens – Greece

 Athens Microneurosurgery Laboratory

REGISTRATION

Online Registration at www.ekne.gr

or e-mail: ekne@neurosurgery.org.gr

Early registration is strongly recommended due to limited stations

REGISTRATION FEE

White Matter Dissection 4-5 May 2020

Single Registrant (1 brain X 1 registrant) **1000 €**

Neurosurgical Anatomy 6-8 May 2020

Single Registrant (1 cadaver specimen X 1 registrant) **1200 €**

Team Registrant (1 cadaver specimen X 2 registrants) **600 €**

Both Courses 4 – 8 May 2020

Single Registrant **1900 €** Team Registrant **1500 €**

WHITE MATTER DISSECTION

Day 1. Monday May 4		
08.30 – 9.00	Registration	
9.00 – 9.30	Surface Anatomy and Radiographic Correlation	S. Komaitis
9.30 - 10.00	Cortical Functional Anatomy	E. Liouta
10.00 – 10.30	F-MRI in Modern Neuroscience and Neurosurgery.	K. Varaki
10.30 – 13.30	Surface Anatomy and Grey Matter Dissection	LAB
13.30 - 14.30	Lunch Break	
14.30 – 15.15	Lateral to Medial Dissection	A. Kalyvas
15.15 – 15.45	White Matter Functional Anatomy	E. Liouta
15.45 – 18.00	Lateral to Medial Dissection (part 1)	LAB
Day 2. Tuesday May 5		
9.00 – 9.45	Tractography and Brain mapping: Applications and Complications	K. Varaki
10.00 – 11.30	Lateral to Medial Dissection (part 2)	LAB
11.30 – 12.00	Medial to Lateral Dissection	F. Liakos
12.00 – 13.30	Medial to Lateral Dissection	LAB
13.30 - 14.30	Lunch Break	
14.30 – 16.30	Medial to Lateral Dissection	LAB
16.30 – 17.30	White Matter Surgery	P. Chumas
17.30 – 18.00	Closing Remarks and Quiz	C. Koutsarnakis

NEUROSURGICAL ANATOMY

Day 1. Wednesday 6 May

8.00 - 8.30	Registration	
8.30 - 9.00	Introduction	G. Stranjalis
9.00 - 10.00	Anterior Fossa. Pterional , Sylvian Fissure, Clinoidectomy, Anterior Interhemispheric	I. Fouyias
10.00 - 13.00	Cadaver Dissection (Right Side)	LAB
13.00 - 14.00	Lunch Break	
14.00 – 15.00	Middle Fossa. Extradural, Cavernous Sinus, Intradural	P. Stavrinou
15.00 – 15.15	Extradural Clinoidectomy	E. Mpairamidis
15.15 - 18.00	Cadaver Dissection (Left Side)	LAB
18.00 – 18.30	Quiz	M. Lee

Day 2. Thursday 7 May

9.00 - 10.00	Posterior Fossa. Midline, Supracerebellar, Transtentorial, Retrosigmoid	G. Stranjalis
10.00 - 13.00	Cadaver Dissection Midline, Retrosigmoid (Right Side)	LAB
13.00 - 14.00	Lunch Break	
14.00 - 15.00	Foramen Magnum. Far Lateral	M. Lee
15.00 - 18.00	Cadaver Dissection (Left Side)	LAB
18.00 – 18.30	Quiz	M. Lee

Day 3. Friday 8 May

9.00 - 10.00	Midline. Parasagittal and Transcallosal	L. Stavrinou
10.00 - 13.00	Cadaver Dissection	LAB
13.00 - 14.00	Lunch Break	
14.00 – 15.00	Approaches to the Pineal Region	A. Tyagi
15.00 – 17.30	Free Dissection	LAB
17.30 – 18.00	Closing Remarks	G. Stranjalis